

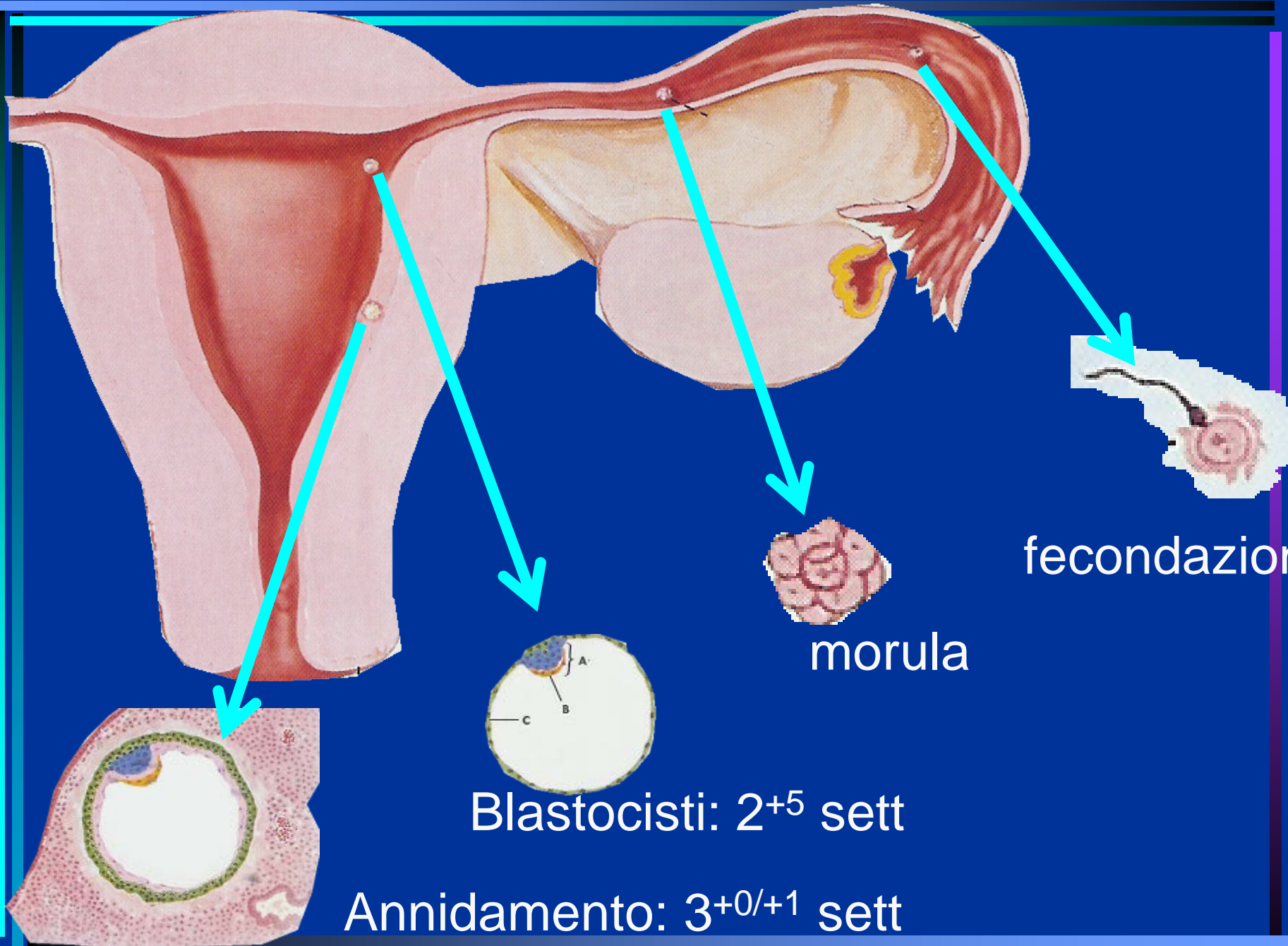
*Ecografia del primo trimestre:
istruzione per l'uso*

Padova, 6 Marzo 2009

**“ Dal concepimento alla
12[^] settimana.
Lo sviluppo dell'embrione ”**

Silvia Narne

Sett	Fase	Eventi
1-2	<ul style="list-style-type: none">• Pre e periovulazione	<ul style="list-style-type: none">• Maturazione follicolare• Ovulazione• Formazione del corpo luteo
3-5	<ul style="list-style-type: none">• Concepimento	<ul style="list-style-type: none">• Fertilizzazione• Morula• Blastocisti• Embrione trilaminare
6-10	<ul style="list-style-type: none">• Embrionale	<ul style="list-style-type: none">• Embrione "C-shape"• Organogenesi• Separazione del sacco vitellino
11-12	<ul style="list-style-type: none">• Fetale	<ul style="list-style-type: none">• Crescita fetale• Avvicinamento delle membrane amniotica e coriale

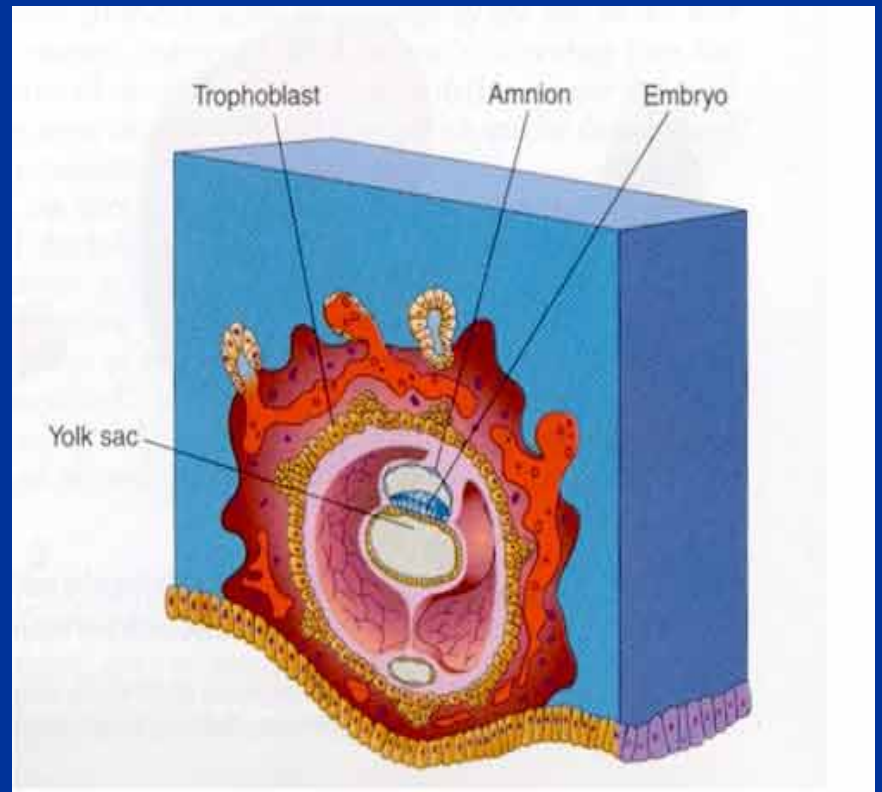
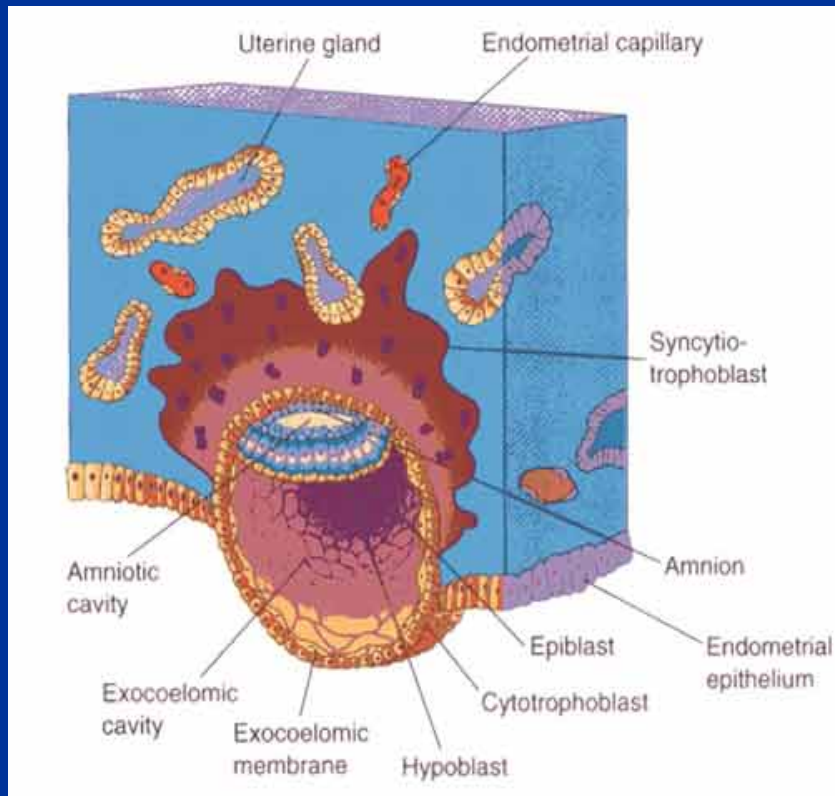


fecondazione

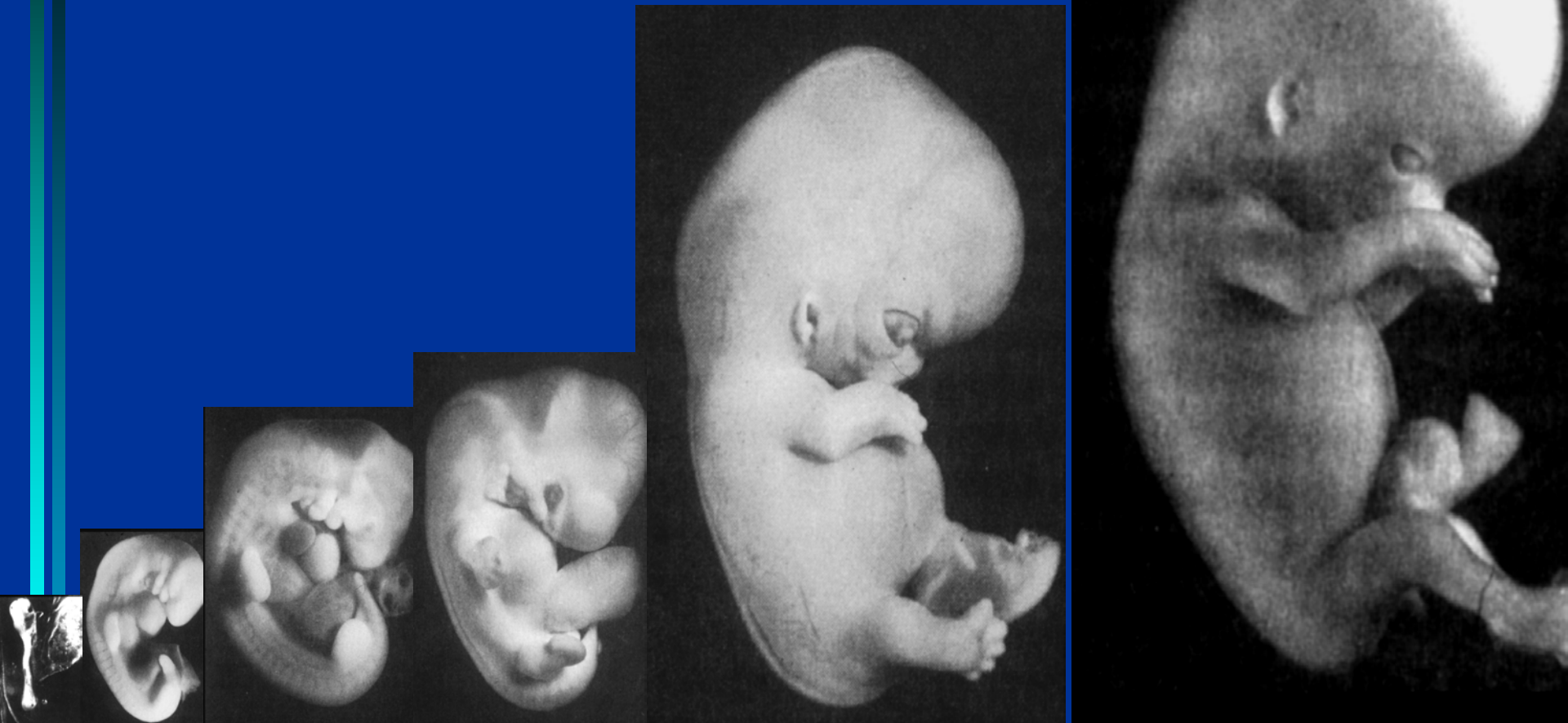
morula

Blastocisti: 2^{+5} sett

Annidamento: $3^{+0/+1}$ sett



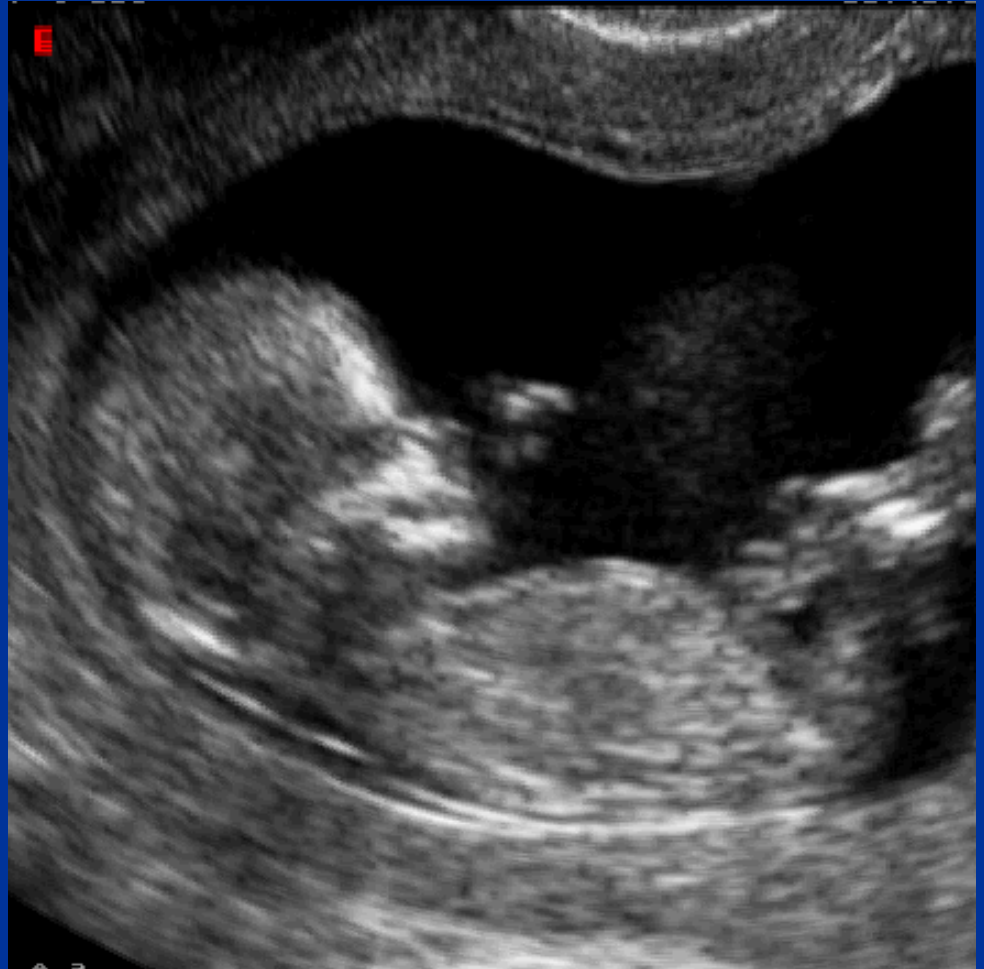
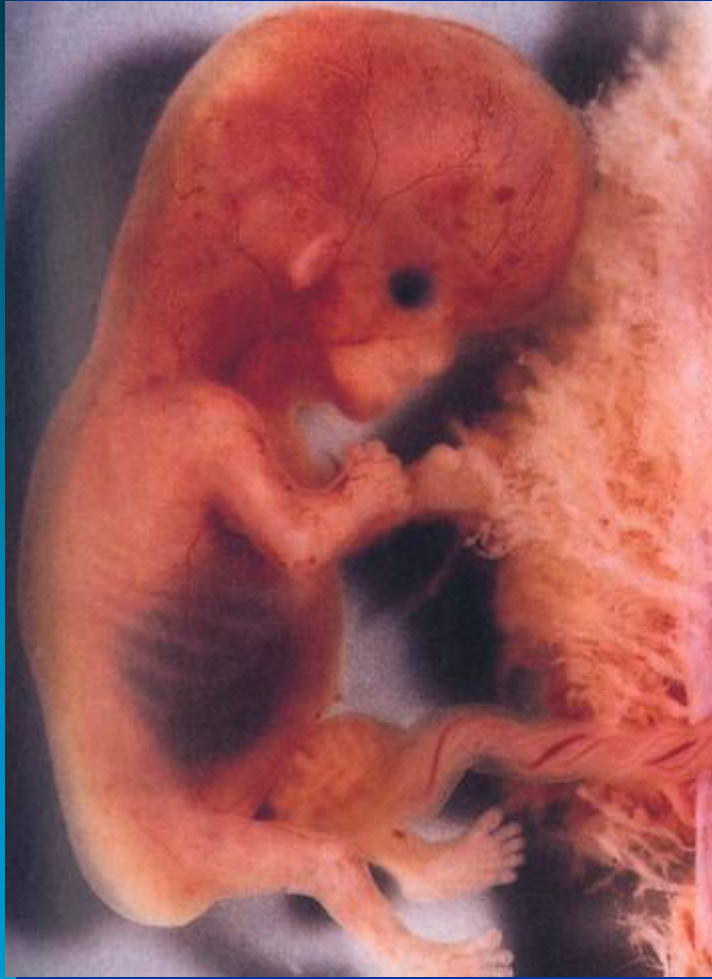
Fase embrionale



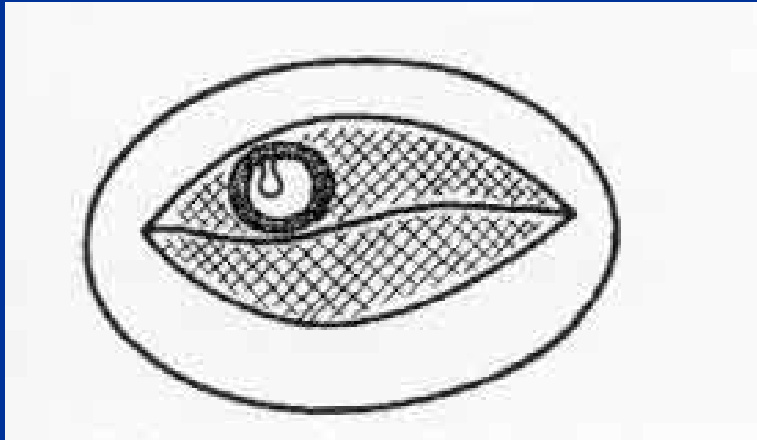
2 6 10 13 20 30 mm

6 weeks → 10 weeks

Fase fetale

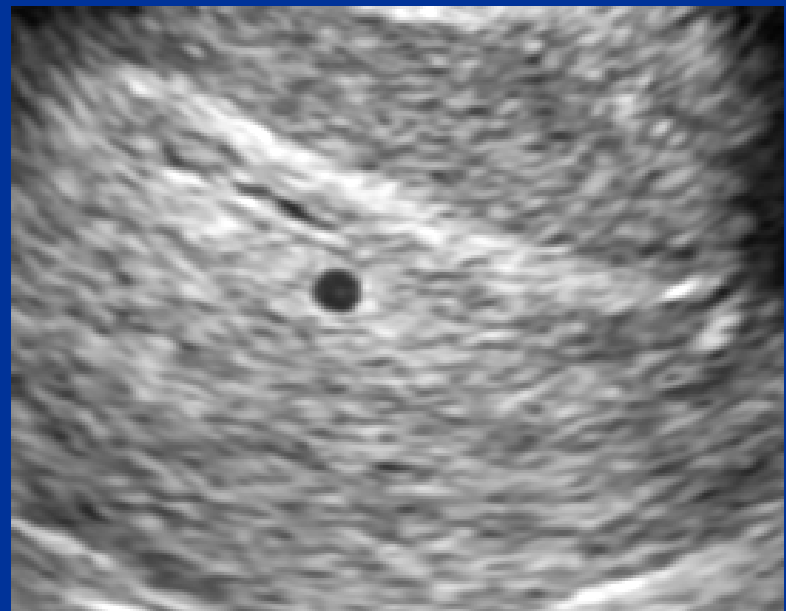
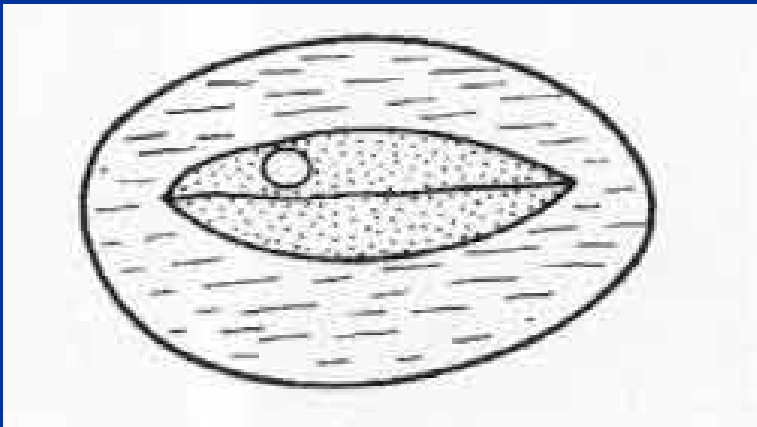


Sacco Gestazionale

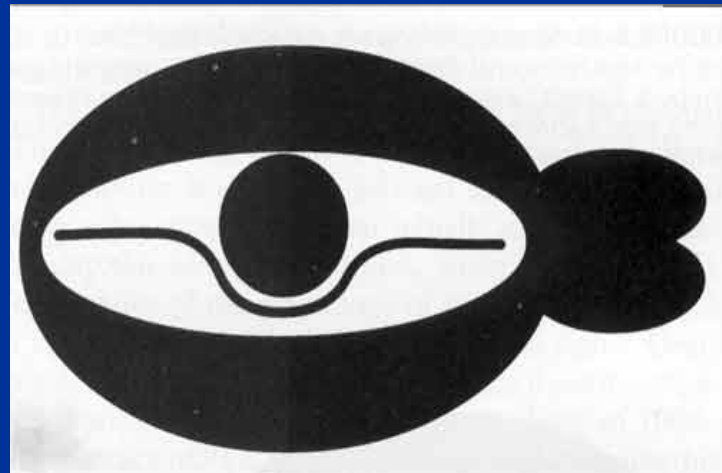
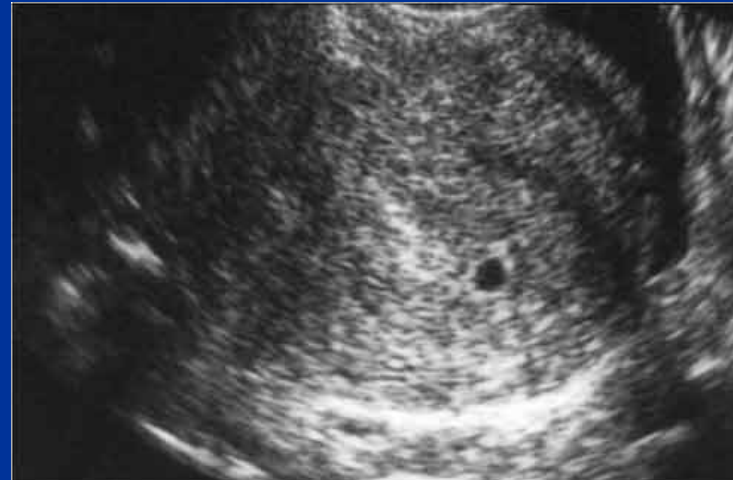
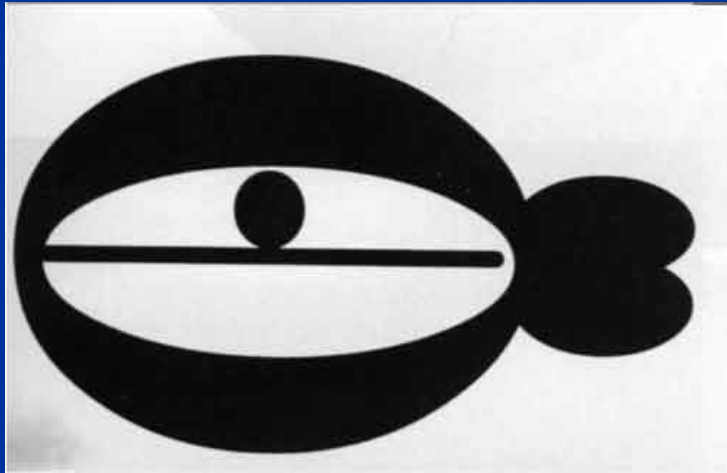


2-3 mm

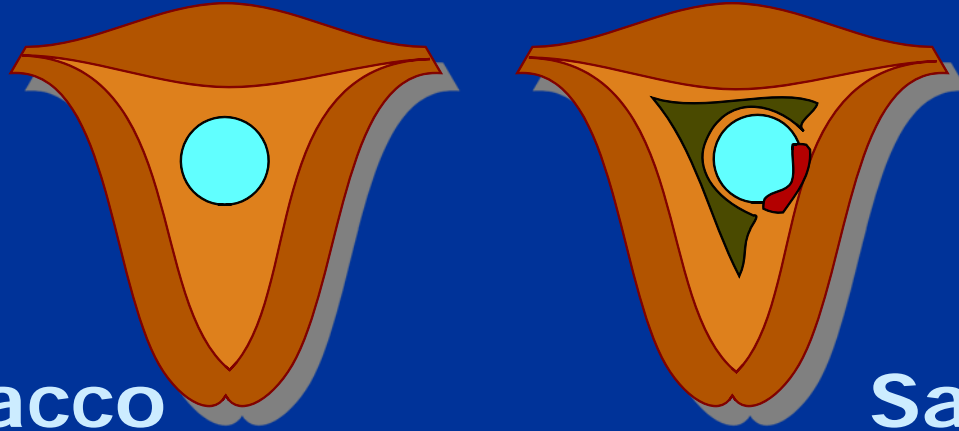
4⁺¹/₊₃ SG



Sacco Gestazionale

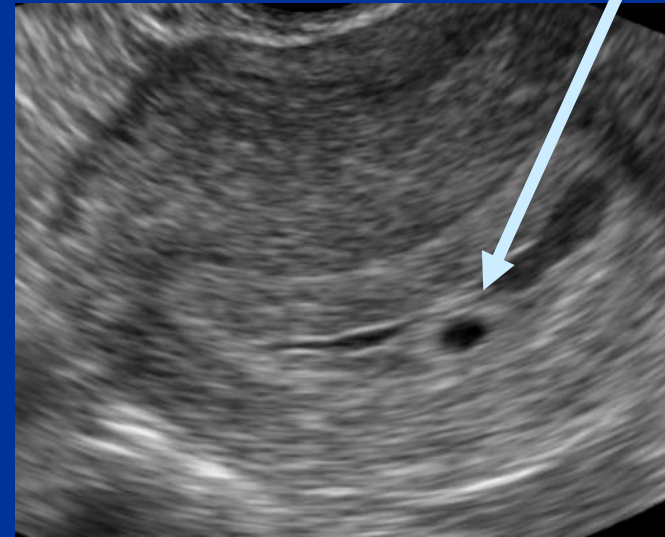
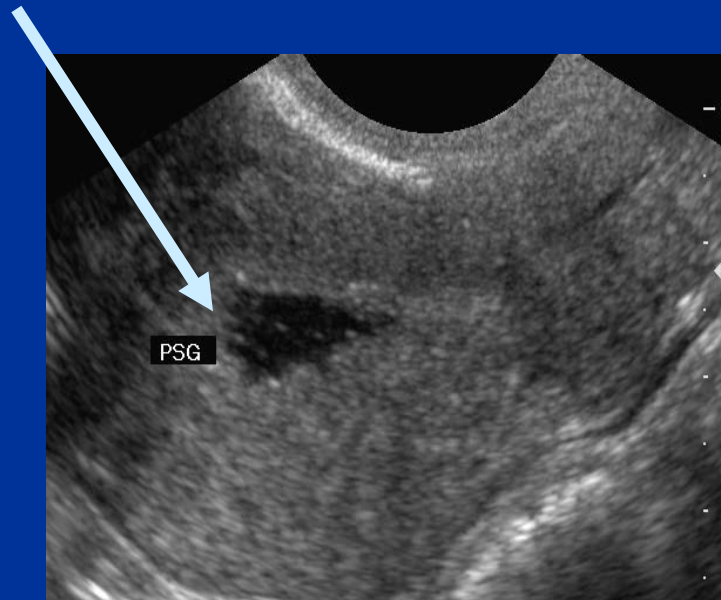


Sacco Gestazionale

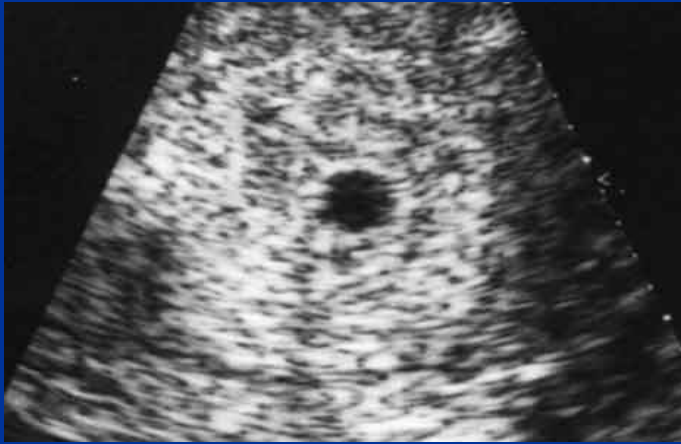


Pseudosacco

Sacco vero



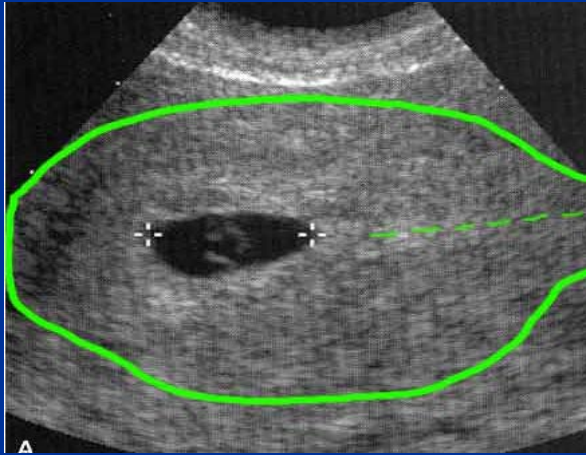
Sacco Gestazionale



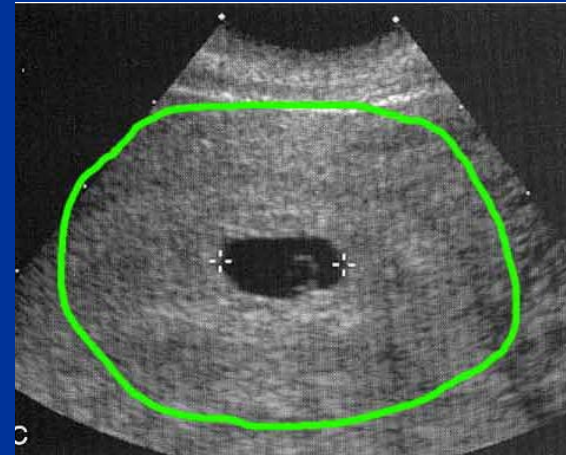
- Fase iniziale:
 - rima iperecogenica sottile
- Fasi successive:
 - corona trofoblastica
 - doppio contorno deciduo coriale

Sacco gestazionale

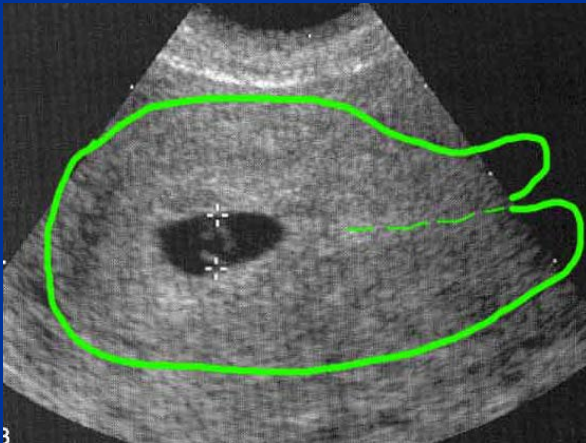
Long



Trasv

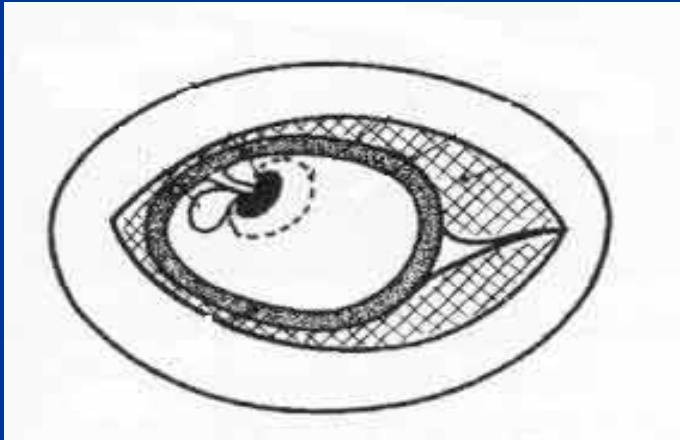


Ant/Pos



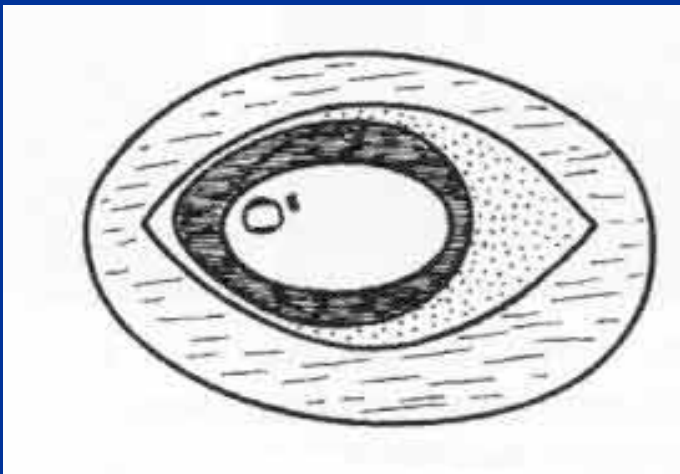
$$L + AP + T / 3 = DM$$

Sacco vitellino

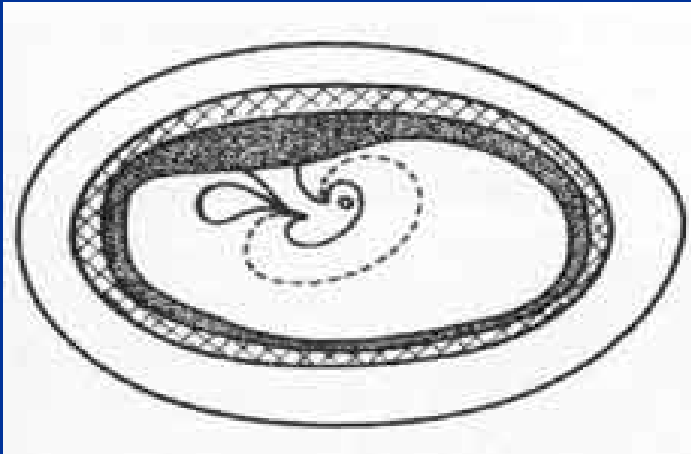


TV: $5^{+1} - 5^{+5}$ SG
(5mm - 8 mm DM)

TA: 7 sg (20 mm DM)

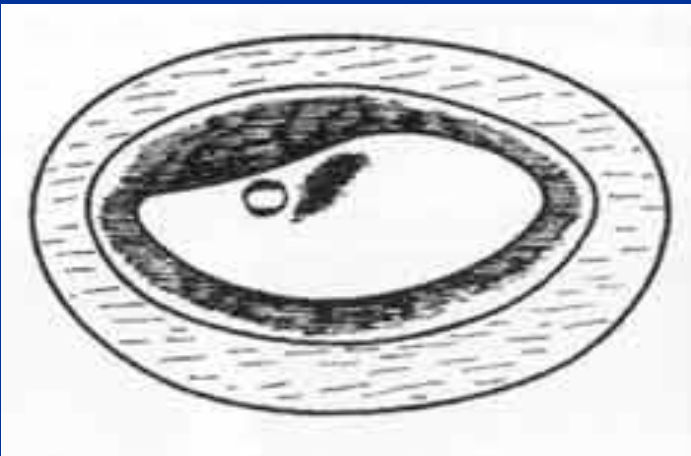


Embrione

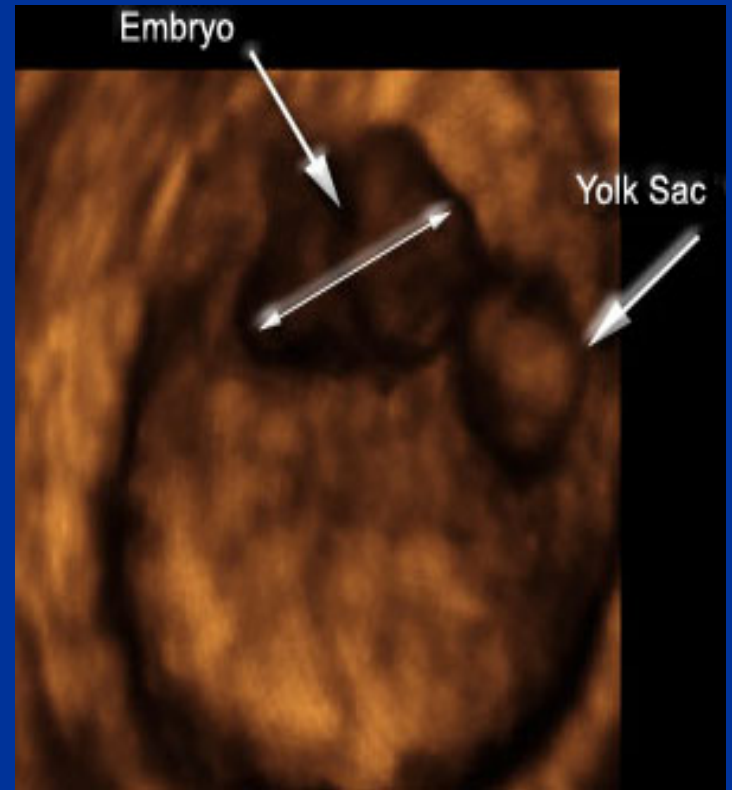
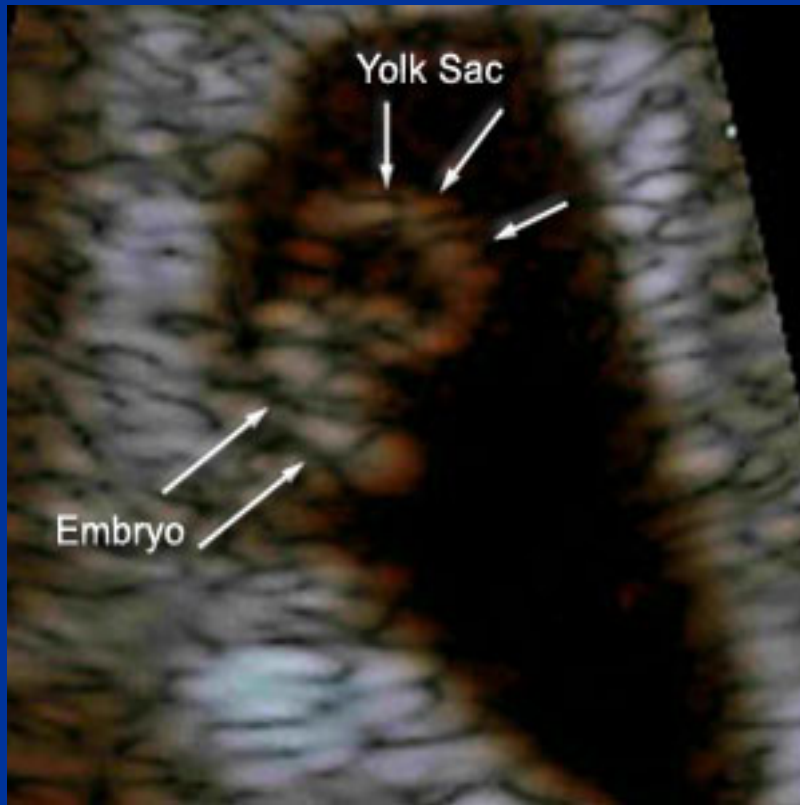


1-2 mm

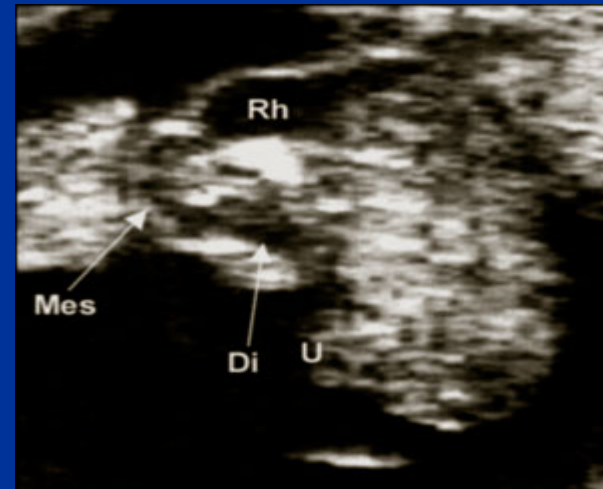
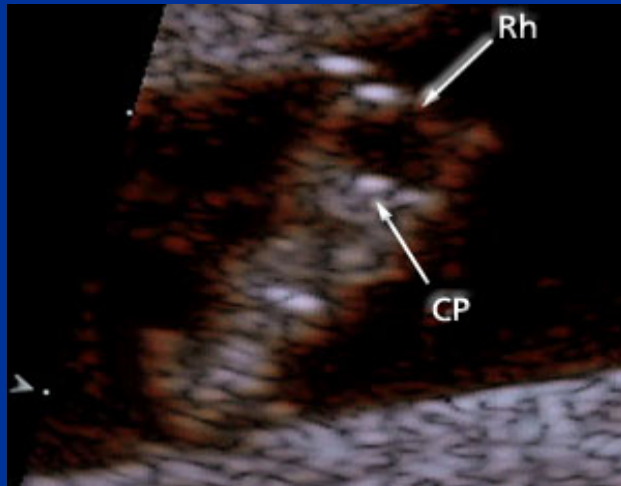
5-6 SG (5-12 mm DM)



Embrione 6 SG (4-8 mm)



Embrione 7 SG (9-14 mm)



Embrione 8 SG (15-22 sg)



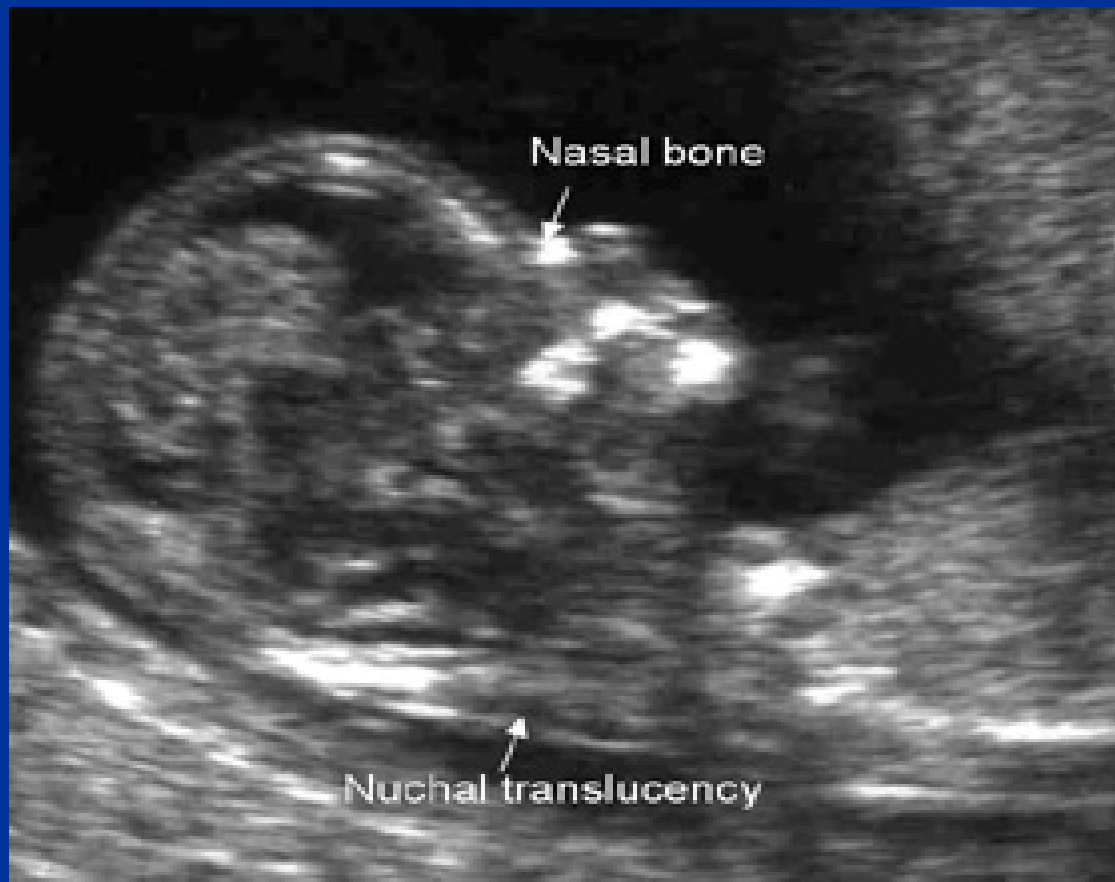
Embrione 9 SG (23-31 mm)



Feto 10-11 SG (32-54mm)



Feto 12-13 SG (DBP 20-30mm)



Feto 12-13 SG (DBP 20-30mm)



Feto 12-13 SG (DBP 20-30mm)

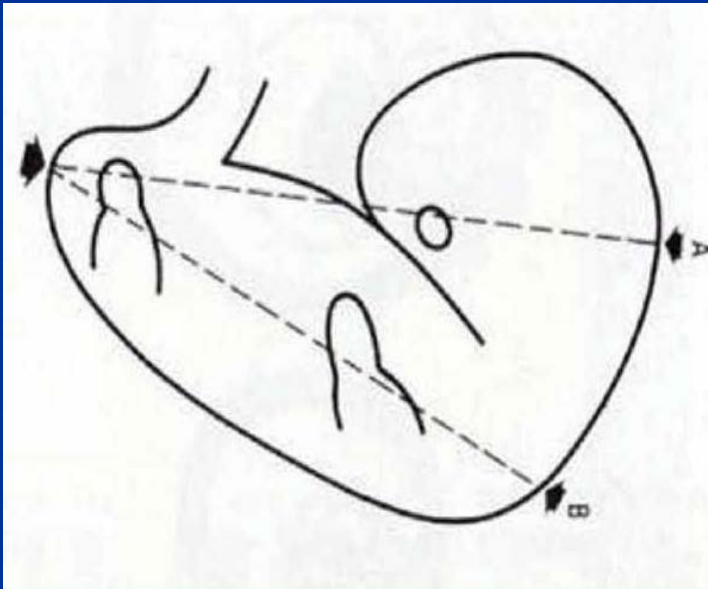


Datazione

Reperto ecografico	SG
Sacco gestazionale (non sacco vitellino, non embrione, non BCF)	5.0
Sacco gestazionale e sacco vitellino (non embrione, non BCF)	5.5
Sacco gestazionale e sacco vitellino (embrione con CRL < 5mm)	6.0
Embrione /Feto (CRL > 5mm)	SG su CRL

CRL: lunghezza cranio-caudale

7-11 SG



CRL: lunghezza cranio-caudale

7-11 SG



CRL (mm)	SA
1	5
4-5	6
8-9	7
15-17	8
23-25	9
33	10
42-45	11

Accuratezza: $\pm 3-4$ gg nel 95% dei casi
Ridatazione se discrepanza ≥ 7 gg

DBP: Diametro Biparietale

> 12 SG

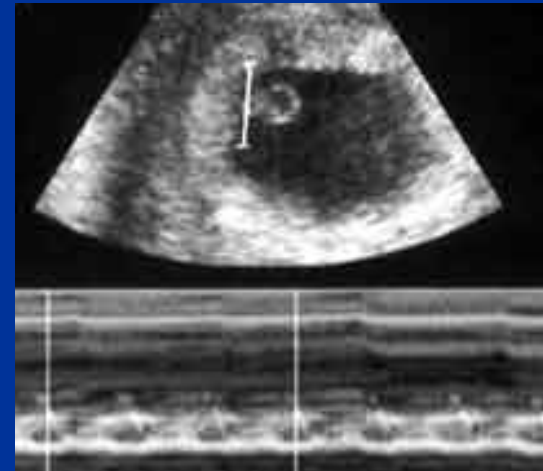


Accuratezza: $\pm 3-4$ gg nel 95% dei casi
Ridatazione se discrepanza ≥ 7 gg

Attività cardiaca

B-mode / M-mode

- ECO TV:
 - CRL: 5 mm (6 SG)
- ECO TA:
 - CRL: 9 mm (7 SG)



NB: E' sconsigliato l'uso del Doppler pulsato o colore nel periodo embrionale

FHR

SG	FRH
6	101.2 ± 8.7
7	124.5 ± 12.1
8	128.0 ± 11.7
9	144.3 ± 19.5
10	136.9 ± 10.9
11	139.8 ± 18.9
12	137.3 ± 12.9

